

Climate Action Plan



**st anne line catholic infant
school**



CLIMATE ACTION PLAN



At st anne line catholic infant school, we believe that small actions can lead to big changes, and we're excited to take steps toward a greener, more sustainable future. Our Climate Action Plan is all about creating a positive impact on the environment while inspiring our students, staff, and families to work together for a cleaner, healthier world.

From reducing waste to saving energy, we are committed to making eco-friendly choices that will benefit not only our school but the community around us. By embracing these efforts, we hope to encourage everyone at st anne line catholic infant school to become climate champions and help build a brighter, more sustainable tomorrow.

SUMMARY

Not started: 21 items

In progress: 4 items





Section

DECARBONISATION

CARRY OUT A BUILDING ENERGY AUDIT

Conducting a building energy audit helps schools pinpoint areas of energy waste, from heating inefficiencies to unnecessary lighting. Schools can use professional energy assessors or pupil-led monitoring programs to analyse energy usage and recommend improvements. Findings can inform decisions on insulation, lighting upgrades, and behaviour-based energy-saving strategies.

NOT STARTED

INSTALL LED LIGHTING

LED lighting is a cost-effective and energy-efficient alternative to traditional incandescent and fluorescent bulbs. By switching to LED lighting, schools can significantly reduce electricity consumption and maintenance costs while lowering their carbon footprint. LED bulbs also generate less heat, improving classroom comfort and reducing the need for air conditioning.

NOT STARTED





Section

DECARBONISATION

INSTALL MOTION SENSORS TO LIGHTS

Motion sensors automatically turn lights on and off depending on occupancy. By installing these in classrooms, hallways, and restrooms, schools can significantly cut down on wasted electricity. This ensures that lights are only used when needed, reducing overall energy consumption.

NOT STARTED

INSTALL SOLAR PANELS

Installing solar panels requires an MCS certified installer to install them. They will normally be able to give you an idea of the amount of solar panels that can fit on the premises. You'll need to also decide if you would like a battery system as well, to help store energy during winter months when there is less sunshine available.

NOT STARTED





Section

DECARBONISATION

RUN A SWITCH OFF CAMPAIGN

A switch-off campaign raises awareness about energy consumption and encourages simple behavioural changes to reduce waste. Schools can run competitions, put up reminder posters, and conduct audits to track energy savings. Engaging pupils through classroom discussions and real-time energy monitoring can make energy efficiency a long-term habit.

NOT STARTED

TRAVEL SURVEY

A travel survey helps schools gather data on pupil and staff commuting habits. By understanding travel patterns, schools can identify opportunities to encourage more sustainable travel options such as walking, cycling, carpooling, or using public transport. This information can support decisions on bike rack installations, road safety improvements, and incentive programs for eco-friendly commuting.

NOT STARTED





Section

DECARBONISATION

UPGRADE ELECTRICAL APPLIANCES TO ENERGY-EFFICIENT ALTERNATIVES

Schools can significantly reduce electricity consumption by upgrading to energy-efficient appliances, including LED lighting, low-energy projectors, and efficient kitchen equipment. Energy Star-rated devices and appliances use less power, lowering operational costs and environmental impact. Schools should prioritise replacing older, inefficient devices first to maximise savings.

NOT STARTED

DELIVER SOME LESSONS OUTSIDE

Outdoor lessons provide pupils with fresh air and a change of scenery while reducing reliance on indoor lighting and heating. Whether it's reading in a shaded area, conducting science experiments outside, or using school gardens for hands-on learning, outdoor education fosters engagement and sustainability awareness.

Started: 28th Aug 2025

IN PROGRESS



Section

ADAPTATION & RESILIENCE

AUDIT AND REDUCE SINGLE-USE PLASTICS

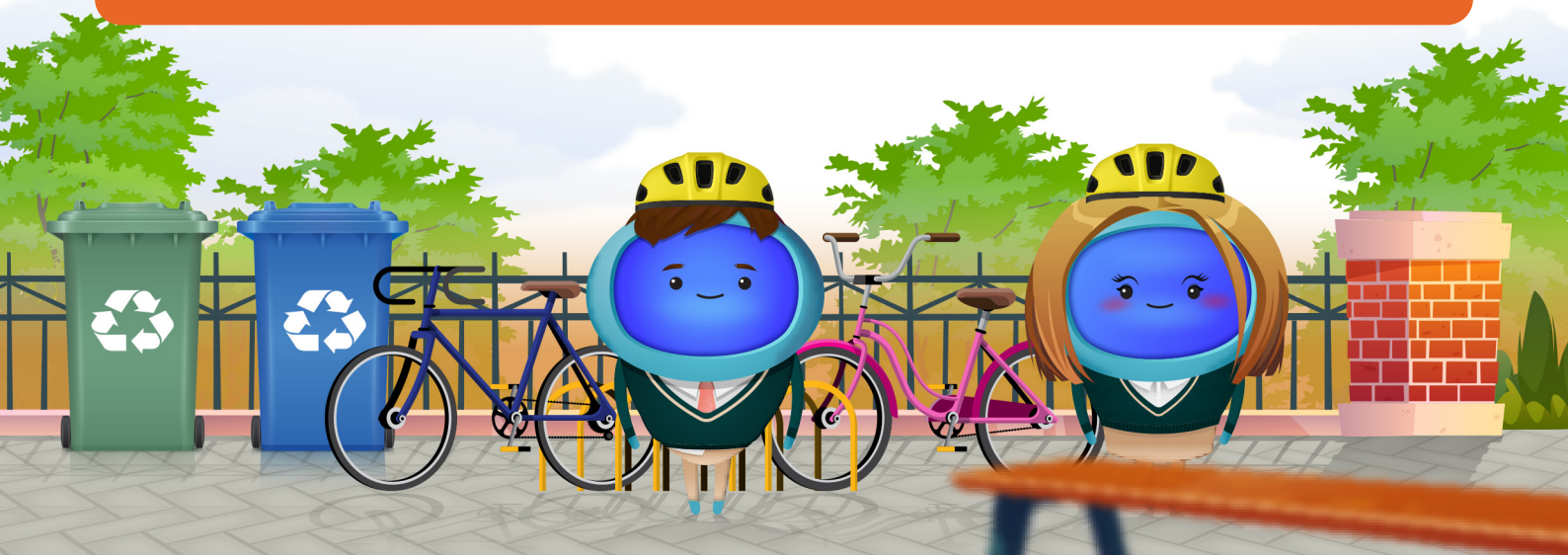
Schools can conduct an audit of their plastic use, identifying areas where single-use plastics can be eliminated or replaced with sustainable alternatives. This includes plastic cutlery, straws, and packaging materials. Encouraging the use of reusable water bottles and lunch containers can also contribute to waste reduction.

NOT STARTED

CREATE A HEATWAVE HEALTH AND SAFETY ASSESSMENT

As heatwaves become more common due to climate change, schools must ensure the wellbeing of pupils and staff during extreme temperatures. A heatwave health and safety assessment should include installing shaded seating areas, increasing hydration points, improving ventilation, and adjusting schedules during hot weather. Proactive planning helps prevent heat-related illnesses while fostering a healthier, more resilient learning environment.

NOT STARTED



Section

ADAPTATION & RESILIENCE

CREATE A SCHOOL COMMUNITY GARDEN FOR FOOD RESILIENCE

Establishing a community garden allows schools to grow their own fruits and vegetables, reducing reliance on external food sources. This initiative provides hands-on sustainability education, promotes healthy eating, and fosters a sense of community among pupils and staff.

NOT STARTED

USE REFILLABLE WHITEBOARD MARKERS AND STATIONERY

Many standard whiteboard markers and pens are single-use, contributing to plastic waste. Schools can transition to refillable options, reducing landfill waste and lowering procurement costs in the long run. Refillable stationery is also often made from sustainable materials, further reducing environmental impact.

NOT STARTED



Section

ADAPTATION & RESILIENCE

PLANT TREES TO CREATE SHADED AREAS

Planting trees strategically around the school campus provides natural cooling, reducing the need for artificial cooling systems during hot months. Trees also improve air quality by filtering pollutants, enhance biodiversity by providing habitats for birds and insects, and create inviting outdoor learning spaces. As they grow, trees contribute to carbon sequestration, offsetting a portion of the school's emissions while simultaneously improving pupil wellbeing.

Started: 28th Aug 2025

IN PROGRESS

SWITCH TO RECYCLED PAPER FOR PRINTING

Schools can significantly reduce their environmental impact by switching to recycled or FSC-certified paper for printing. Recycled paper manufacturing requires less water and energy compared to virgin paper, reducing carbon emissions. Schools should also consider digital alternatives to minimise paper use.

Started: 28th Aug 2025

IN PROGRESS



Section

BIODIVERSITY

BUILD AN INSECT HOTEL

Log piles and disused wood pallets can be used to create a natural habitat for insects, amphibians, and fungi, enhancing biodiversity and promoting decomposition processes. They can be strategically placed in school gardens to serve as learning tools for ecology studies.

NOT STARTED

CREATE A HERB GARDEN FOR THE KITCHEN TO USE

Schools can create herb gardens to supply fresh ingredients for the kitchen, reducing the need for store-bought herbs and promoting sustainable food practices. Pupils can be involved in growing and maintaining the garden, learning valuable gardening and nutrition skills. Herb gardens also attract pollinators, supporting local biodiversity.

NOT STARTED





Section

BIODIVERSITY

JOIN COMMUNITY INITIATIVES

Community environmental initiatives such as tree planting, litter picking, or local green space protection projects can provide excellent opportunities for pupils and staff to make a positive impact on their local environment. These initiatives also help build a culture of sustainability within your school or MAT.

NOT STARTED

PARTICIPATE IN THE RSPB BIRDWATCH

Schools can engage pupils in the Royal Society for the Protection of Birds (RSPB) Birdwatch, an annual citizen science event where participants record and report bird sightings. This initiative helps develop observation skills, raises awareness of biodiversity, and contributes valuable data for conservation efforts. Schools can integrate this activity into science and geography lessons to reinforce learning.

NOT STARTED





Section

BIODIVERSITY

START A GARDENING CLUB

A gardening club provides pupils with hands-on experience in growing flowers, vegetables, and trees, while also teaching them about sustainability, soil health, and biodiversity. Gardening improves mental well-being, fosters teamwork, and enhances outdoor learning opportunities. Schools can use gardens to produce food, beautify the environment, and engage pupils in long-term eco-friendly initiatives.

NOT STARTED

WORK WITH THE PUPILS TO GET THEIR VIEWS ON HOW THE SCHOOL SITE SHOULD LOOK

Schools can involve pupils in decision-making about their learning environment, ensuring that sustainability considerations are incorporated. Whether through workshops, surveys, or school councils, pupil input can lead to more effective green space planning, improved outdoor learning areas, and projects that align with their needs and interests. Involving pupils also increases their sense of ownership and responsibility for the school environment.

NOT STARTED



Section

CLIMATE EDUCATION & GREEN SKILLS

CREATE A SCHOOL SUSTAINABILITY PLEDGE PROGRAM

Schools can implement a pledge program where pupils and staff commit to eco-friendly actions such as reducing waste, conserving energy, and using sustainable transport. Regular updates and rewards keep engagement high.

NOT STARTED

DEVELOP THE SCHOOL'S OWN SUSTAINABLE COOKBOOK

Schools can develop their own cookbook, focusing on recipes that emphasise local, seasonal, and low-waste ingredients. This initiative encourages students and families to make more sustainable food choices while reducing food waste. The cookbook can be created with input from pupils, staff, and parents, turning it into a community-driven sustainability project. Digital versions can further reduce printing costs and environmental impact.

NOT STARTED



Section

CLIMATE EDUCATION & GREEN SKILLS

HOST A SUSTAINABILITY-THEMED ASSEMBLY EACH TERM

Hosting a sustainability-themed assembly each term ensures that pupils remain engaged with environmental topics. These events can feature guest speakers, pupil-led presentations, and school-wide challenges to encourage participation. Assemblies help build a culture of sustainability and reinforce its importance throughout the school community.

NOT STARTED

ORGANISE A PUPIL-LED ENERGY AND WASTE AUDIT

A school-wide audit allows pupils to evaluate energy use and waste production, identifying areas for improvement. This hands-on approach helps pupils understand real-world sustainability challenges and implement practical solutions such as reducing electricity use, recycling more effectively, and cutting down on single-use plastics.

NOT STARTED



Section

CLIMATE EDUCATION & GREEN SKILLS

CREATE A SCHOOL ECO COMMITTEE

A school eco committee gives pupils the opportunity to lead sustainability projects, influence school policies, and advocate for environmental improvements. This initiative fosters leadership, encourages responsibility, and ensures sustainability remains a core focus in school decision-making.

Started: 28th Aug 2025

IN PROGRESS

